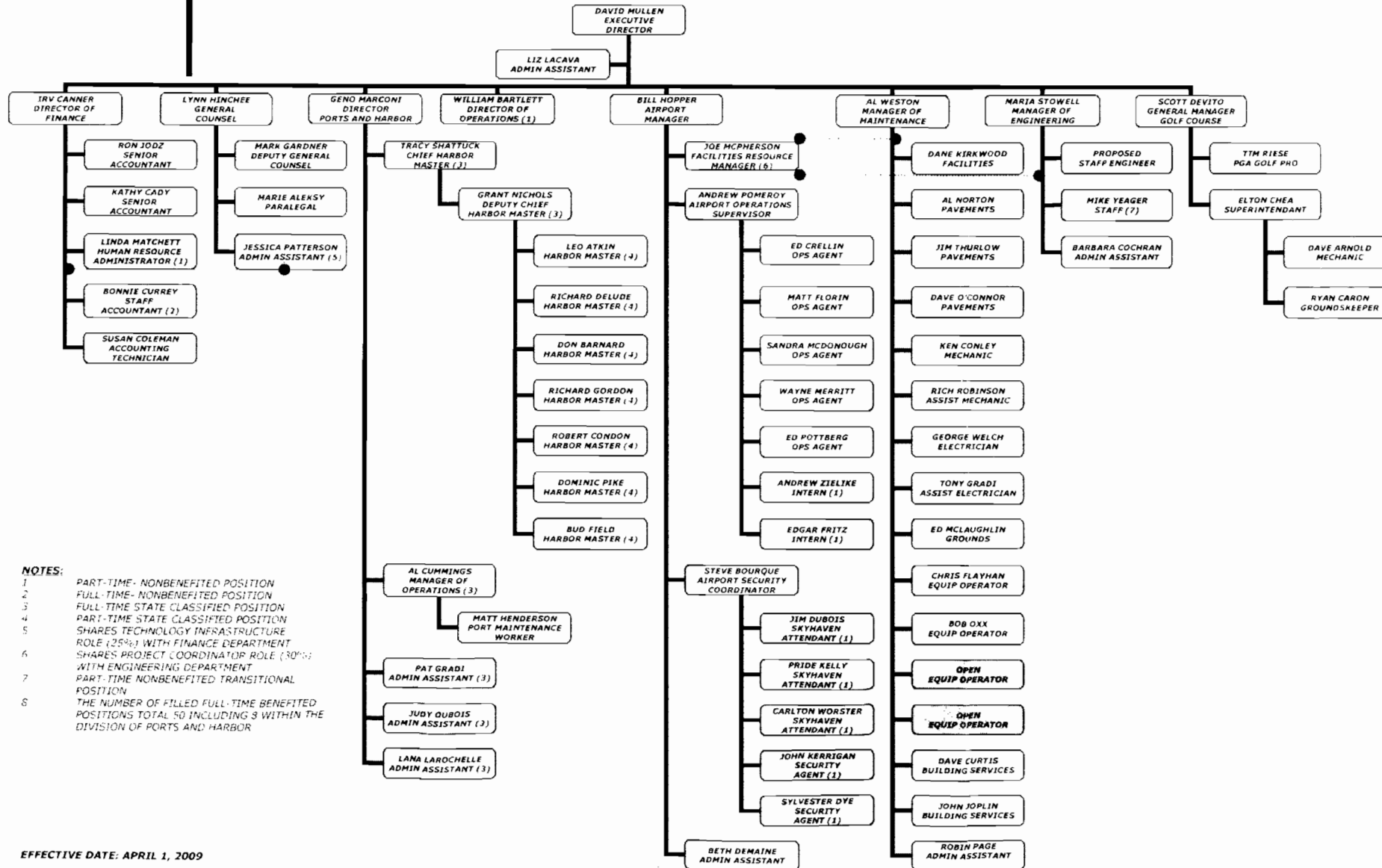


PEASE DEVELOPMENT AUTHORITY STAFF ORGANIZATION CHART



- NOTES:**
- 1 PART-TIME - NONBENEFITED POSITION
 - 2 FULL-TIME - NONBENEFITED POSITION
 - 3 FULL-TIME STATE CLASSIFIED POSITION
 - 4 PART-TIME STATE CLASSIFIED POSITION
 - 5 SHARES TECHNOLOGY INFRASTRUCTURE ROLE (25%) WITH FINANCE DEPARTMENT
 - 6 SHARES PROJECT COORDINATOR ROLE (30%) WITH ENGINEERING DEPARTMENT
 - 7 PART-TIME NONBENEFITED TRANSITIONAL POSITION
 - 8 THE NUMBER OF FILLED FULL-TIME BENEFITED POSITIONS TOTAL 50 INCLUDING 3 WITHIN THE DIVISION OF PORTS AND HARBOR

EFFECTIVE DATE: APRIL 1, 2009